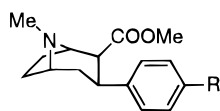


Additions and Corrections

1996, Volume 39

Aloke K. Dutta,* Cen Xu, and Maarten E. A. Reith: Structure-Activity Relationship Studies of Novel 4-[2-[Bis(4-fluorophenyl)methoxy]ethyl]-1-(3-phenylpropyl)piperidine Analogs: Synthesis and Biological Evaluation at the Dopamine and Serotonin Transporter Sites.

Page 749. The structures of Win 35, 428 and RTI-55 were drawn incorrectly in Figure 1. The correct structures are shown below.



Win 35, 428, R= F
RTI-55, R= I

JM960344T

S0022-2623(96)00344-5